

THE LINDEN MODEL

11215 N. Ashbury Woods Drive
Ashbury Woods Subdivision, Mequon

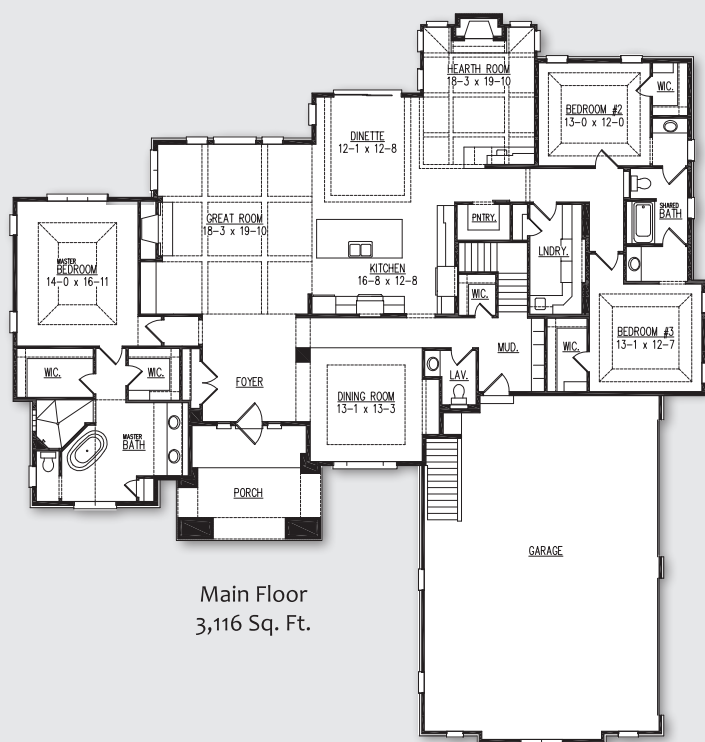
PLAN DETAILS

- 3,116 Sq. Ft.
- 3 bedrooms, 2.5 baths
- 3 car garage
- Kitchen with island seating and walk-in pantry
- Formal dining room, hearth room
- Master suite with dual walk-in closets, walk-in tile shower and whirlpool tub
- 1,322 Sq. Ft. finished lower level with game room, wet bar, rec room, exercise room, and fourth bedroom with full bath and walk-in closet

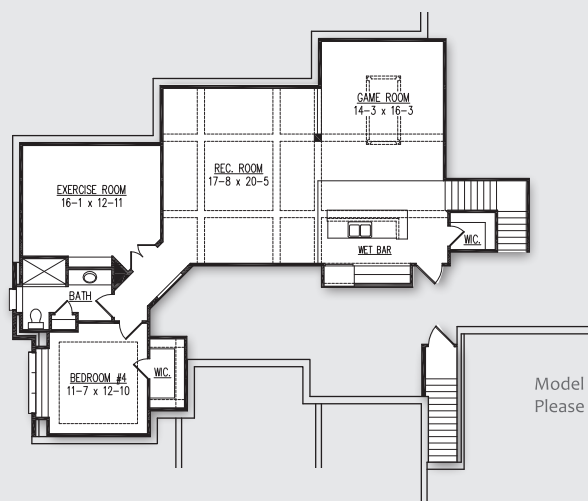
Directions: I-41 exit 48 onto WI-145. Keep right onto N 124th St. Continue 2.2 miles as the road turns into Wausaukee Rd. After 2 miles, turn right onto Mequon Rd. Turn left after .6 mi. onto Ashbury Woods Dr to model.

Model Hours: Coming This Spring!

follow us on



Main Floor
3,116 Sq. Ft.



Optional Finished
Lower Level
Adds 1,322 Sq. Ft.

Model home as depicted may not represent base home plan.
Please see a sales representative for details.

