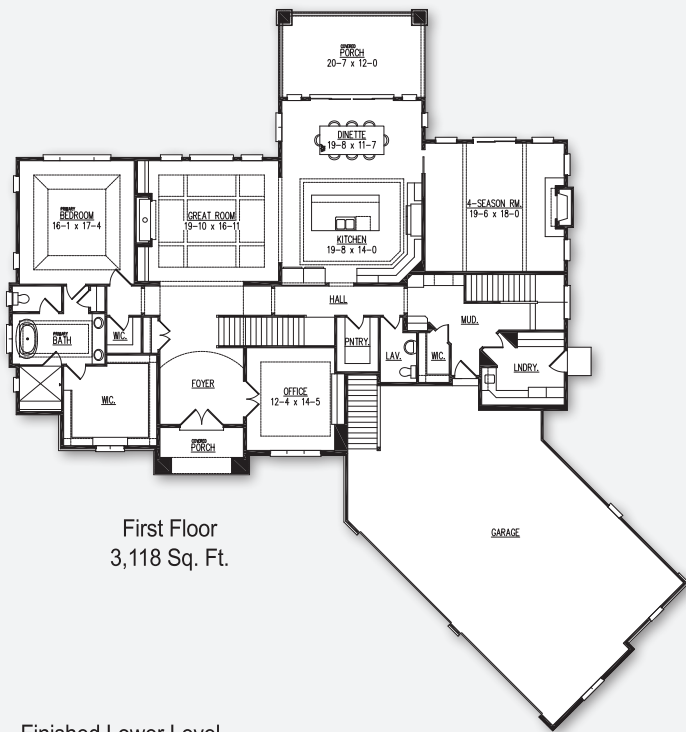




The Highland Model



First Floor
3,118 Sq. Ft.

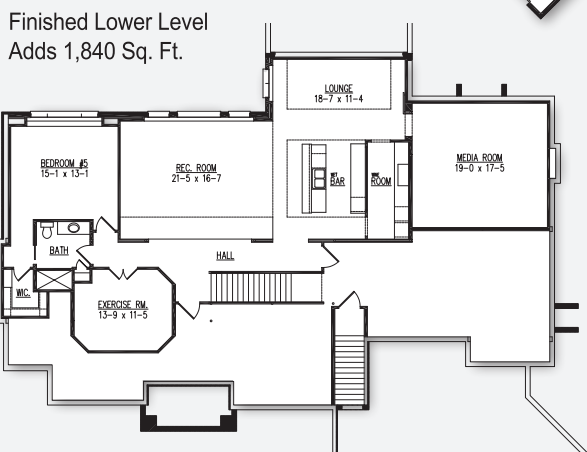
POINTS OF INTEREST

- 4,342 Sq. Ft.
- 4 bedrooms, 3.5 bathrooms
- 4-car canted garage
- First floor primary suite, home office, 4-season room, covered porch, second floor nook
- 1,840 Sq. Ft. lower level adds rec room, lounge, wet bar with wine room, media room, exercise room, fifth bedroom and full bath

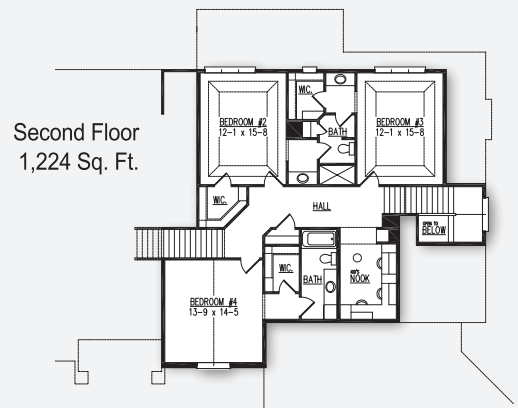
Model Hours: Saturdays & Sundays, noon to 4 pm, or by appointment, Closed holiday weekends.

3395 White Cedar Drive, Glacier's Trail, Middleton

Directions: From Mineral Point Rd., head to Pioneer Rd. Go south to Valley View Rd. Take Valley View Rd. West until it turns into Mound View. Take Moundview south to Saracen Way. Take Saracen Way east to Blue Cedar Dr. North on White Cedar Dr. to model.



Finished Lower Level
Adds 1,840 Sq. Ft.



Second Floor
1,224 Sq. Ft.



Model home as depicted may not represent base home plan. Please see a sales representative for details.

follow us on

