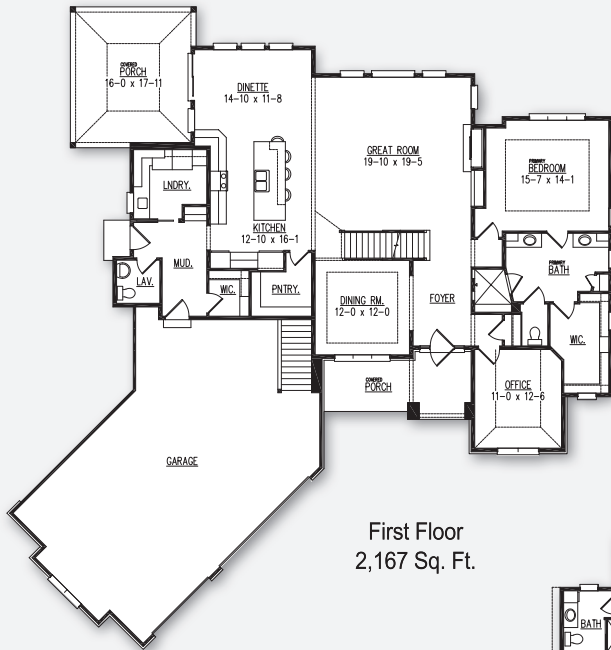




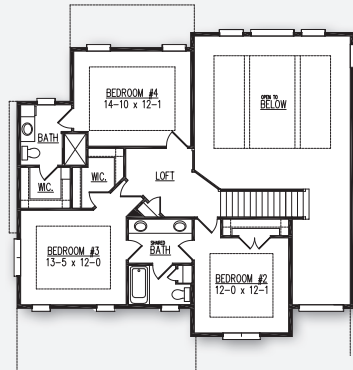
The Melrose Model



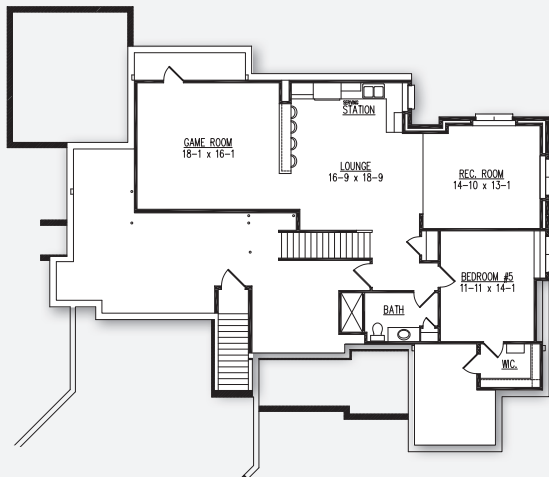
First Floor
2,167 Sq. Ft.

POINTS OF INTEREST

- 3,060 Sq. Ft.
- 4 bedrooms
- 2.5 bathrooms
- 3-car canted garage
- Home office, formal dining room, screen porch
- 823 Sq. Ft. finished lower level adds rec room, wet bar, fifth bedroom and full bath



Second Floor
1,161 Sq. Ft.



Finished Lower Level
Adds 909 Sq. Ft.

Model Hours: Coming Soon!

**3579 Superior Oak Drive
Tumbledown Farm, Middleton**

Directions: US-12 W to Mineral Point Rd in Madison. Take exit 254 for Mineral Point Rd. toward Wisconsin M/Wisconsin S. Use the left 2 lanes to keep left at the fork and continue toward Mineral Point Rd. At the traffic circle, take the 2nd exit onto W. Mineral Point Rd. Turn left onto Pioneer Rd. Turn right onto Tumbledown Trail. Turn left on Superior Oak Dr. to model.



Model home as depicted may not represent base home plan. Please see a sales representative for details.

follow us on

